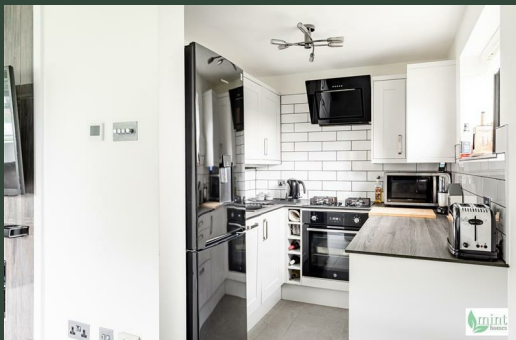


Southam
House Addlestone Park
Addlestone
KT15 1RU



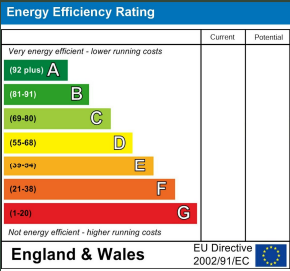


Southam
House Addlestone Park

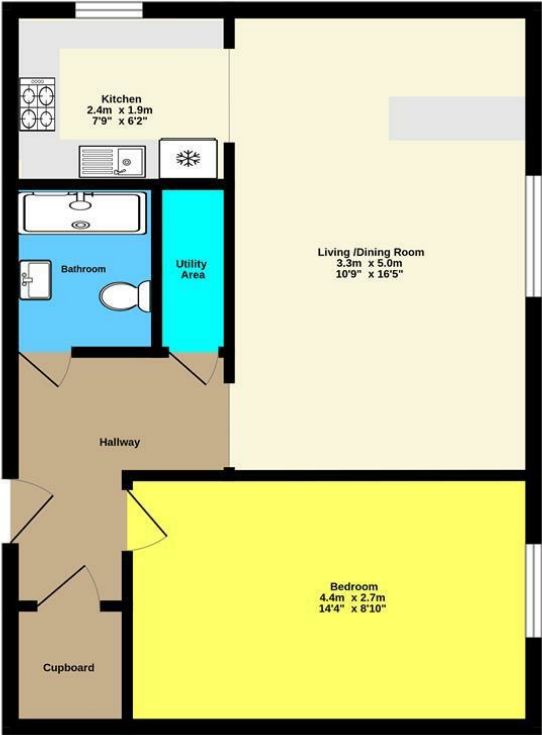
Local Authority
Runnymede

Council Tax Band
C

Directions



Agents Note: Whilst every care has been taken to prepare these particulars, they are for guidance purposes only. All measurements are approximate and are for general guidance purposes only and whilst every care has been taken to ensure their accuracy, they should not be relied upon and potential buyers/tenants are advised to recheck the measurements



Ground Floor Flat
43.3 sq.m. (466 sq.ft.) approx.

Marketed by mint homes Ltd

TOTAL FLOOR AREA : 43.3 sq.m. (466 sq.ft.) approx.

Marketed by mint homes Ltd. Whilst every attempt has been made to ensure the accuracy of the information contained herein, measurements of doors, windows, rooms and any other items are approximate and no responsibility is taken by any error. Prepared by Simon Lee

Made with Metropix CS2026



Mint Homes
14 Nicholas Gardens
Pyrford
Surrey
GU22 8SD



Contact

01932 336177
hello@minthomes.uk
minthomes.uk

